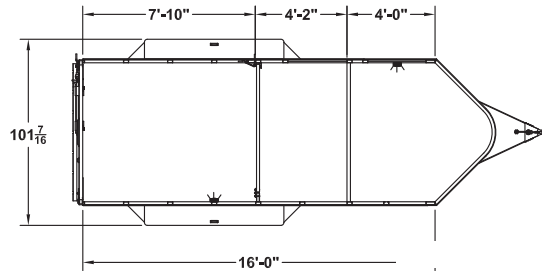
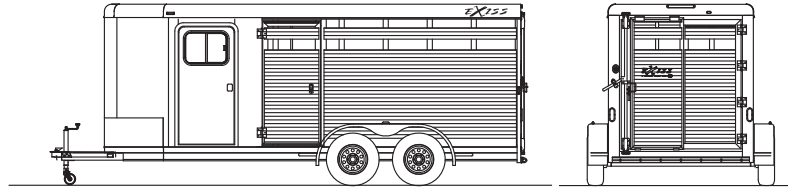




# 2025 EXISS EXPRESS STC 616 BP - 7'2" TALL

## CONSTRUCTION FEATURES

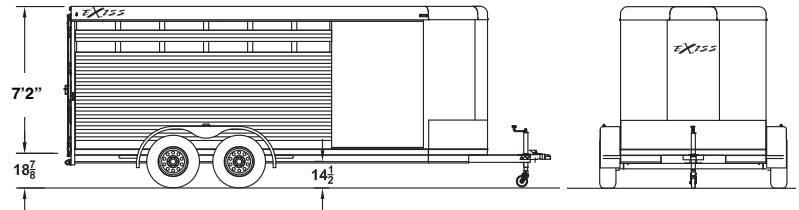
- 6'8" outside width
- Available with 6'8" or 7'2" inside height
- Available in 16' length
- All aluminum construction w/ single piece aluminum roof
- Interlocking extruded aluminum non-skid plank floor
- 2" x 4" I-beams on 12" centers
- (2) 5,200 lb. rubber torsion axles w/ electric brakes
- (5) 15" 6 hole steel wheels w/ 8 ply import tires
- Aluminum V-hitch w/ 2 5/16" coupler
- Breakaway switch w/ battery and slip hook safety chains
- 2,000 lbs. top wind jack w/ wheel
- .040 white aluminum sheets on nose, sides
- Extruded aluminum slat outside of livestock area
- Spare tire w/ interior mount
- 3/8 transferable warranty



EXPRESS STC 616 BP  
FLOORPLAN  
7'2" Tall

## STOCK AREA FEATURES

- Two air gaps w/ Plexiglas tracks in stock area
- Heavy-duty 32" streetside unload door (w/air gaps)
- Full swing center gate w/ hold back
- Heavy-duty slam latch w/ external release
- Full swing rear gate (w/ air gaps)
- Easy-glide slider w/ handle on rear door (w/ air gaps)
- One LED dome light in stock area w/ switch on rear frame
- Full width, rear rubber bumper



## TACK AREA FEATURES

- 4' straightwall tack room
- Camper door w/ sliding window, dead bolt and screen door
- One interior LED lights in tack area w/ wall switch

## ADDITIONAL FEATURES ADDED

- POP UP 2 WAY 5x9 ROOF VENT (2 QTY)
- HALTER HOOK BAR - SET OF 6 (PLASTIC)
- ALUMINUM BRUSH TRAY
- FOLD DOWN BLANKET BAR
- EXTERIOR TIE RING (6 QTY)
- INTERIOR TIE RING (3 QTY)
- RUBBER MAT ON FLOOR IN DRESSING ROOM
- 7'2" TALL 4 TIER ADJUSTABLE SADDLE RACK
- METALLIC BLACK SIDE SHEETS

## CUSTOMER CARE

**8 Years Structural & Transferable Warranty**  
**3 Years on Components**

MSRP: \$35,445

**SALE PRICE: \$31,999**

### YOUR PAYMENT

MONTHLY	BI-WEEKLY
<b>\$389</b>	<b>\$180</b>
TERM/AM	INTEREST RATE
180/180	10.99%
	APR 12.26%

OAC, finance fee of \$599 included in payment, cost of credit during term: \$35,806.47.

MODEL	SIZE	GVWR	EMPTY	AXLE
EXPRESS STC 616 BP - 7'2" Tall	6'8" x 16'	9,995	TBD	(2) 5,200